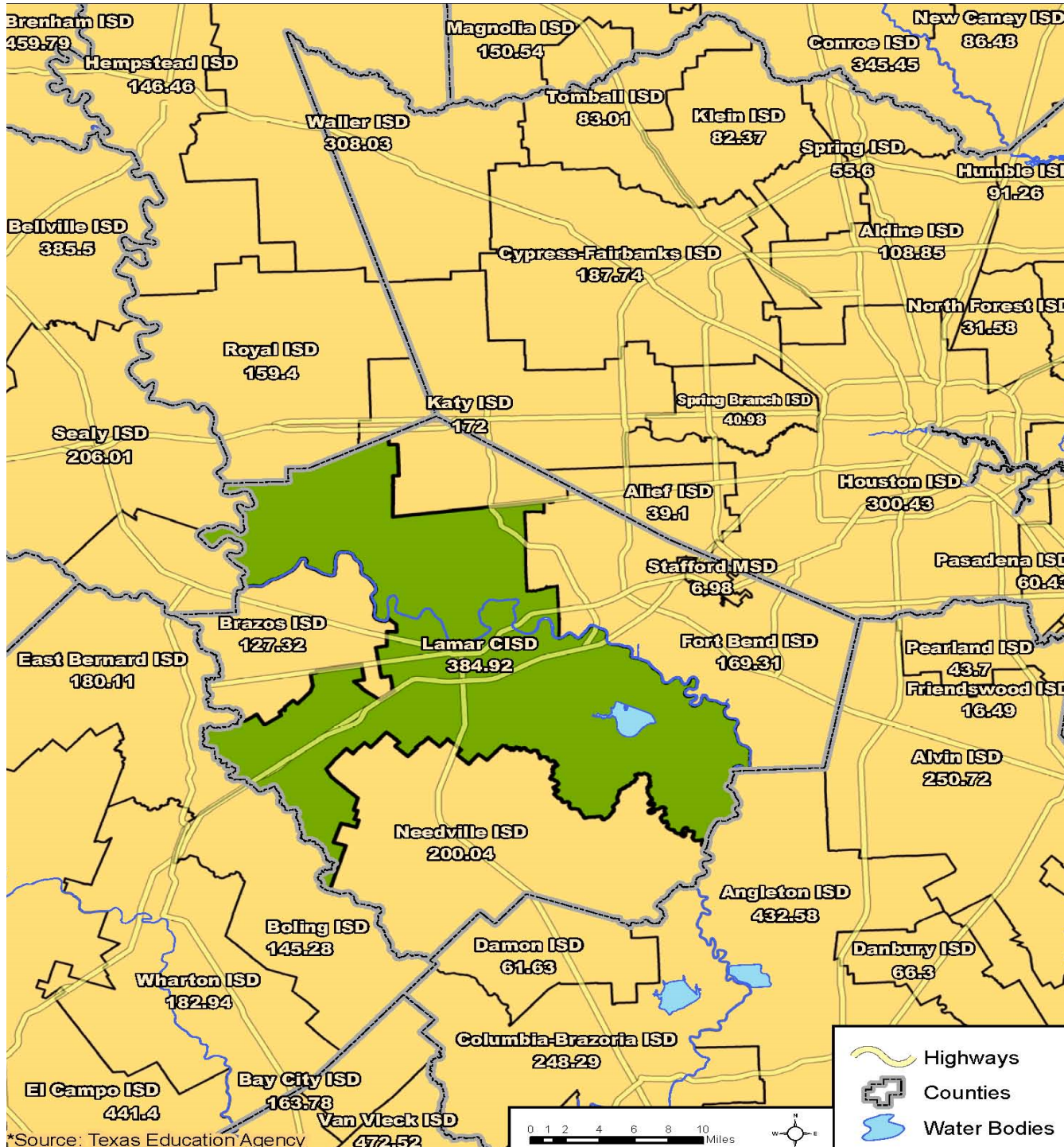


Lamar C.I.S.D.

Demographic Update

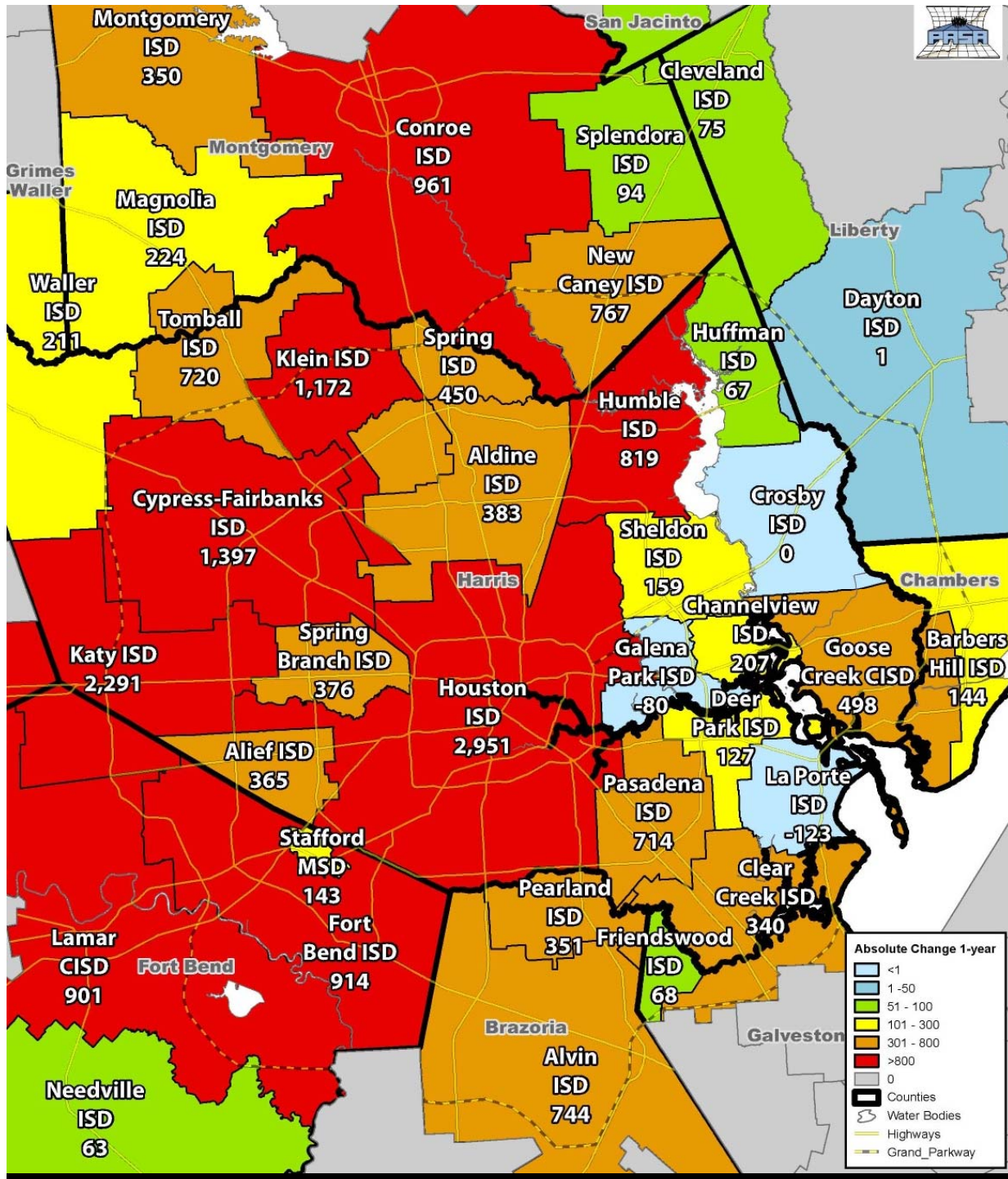
May 21, 2014





Square Miles In Lamar C.I.S.D.

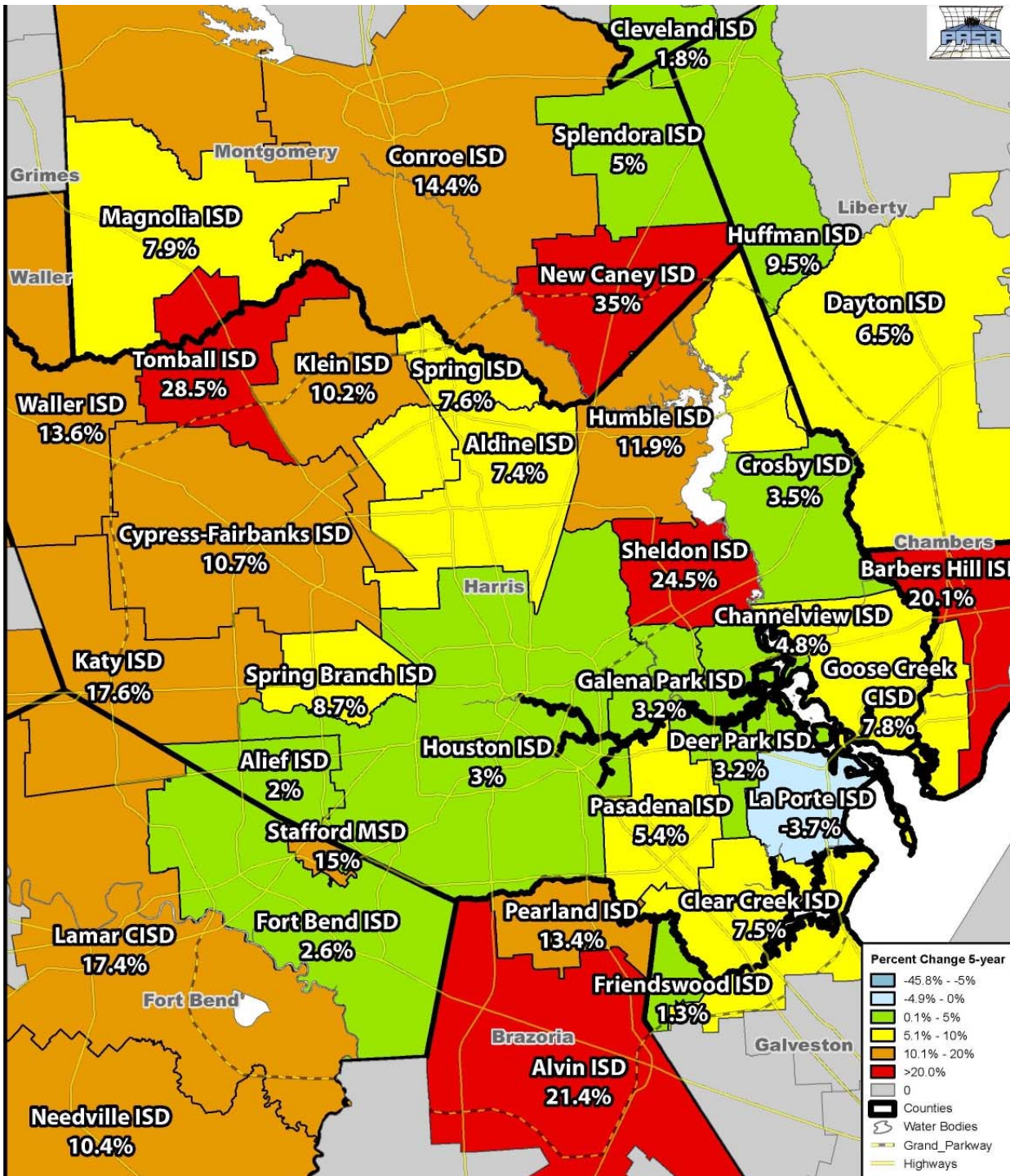
*Source: Texas Education Agency



Absolute Change In Student Enrollment

Fall 2012 to Sept. 2013

*pre-PEIMS enrollment estimate



Percent Change In Student Enrollment

Fall 2008
to
Fall 2013

*pre-PEIMS enrollment estimate

Unique Demographic Characteristics

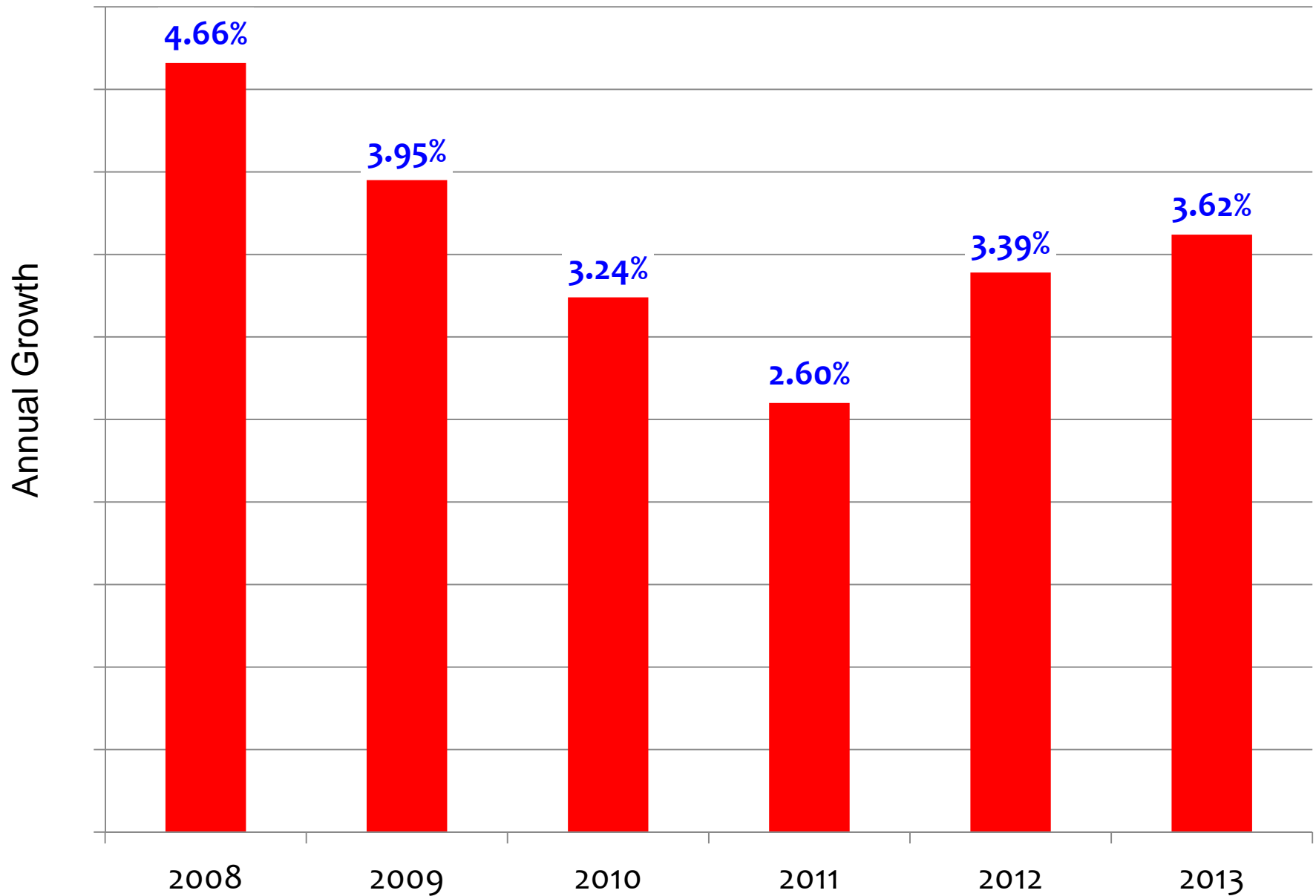
Lamar C.I.S.D.: 2013-2014

Several factors give Lamar C.I.S.D. a competitive advantage for development (developers choosing to build in the District)

- **Low Economically Disadvantaged population (52.2%)**
- **High STAAR passage rate (80.1%) --- based on PASA's assessment of all Texas school districts (Spring 2011)**
- **Highly educated population (32% have bachelor's degree)**
- **High median income level (\$77,471)**
- **High growth due to land availability in development path and other factors**



Past Growth Rates



Recent Housing Growth Trends

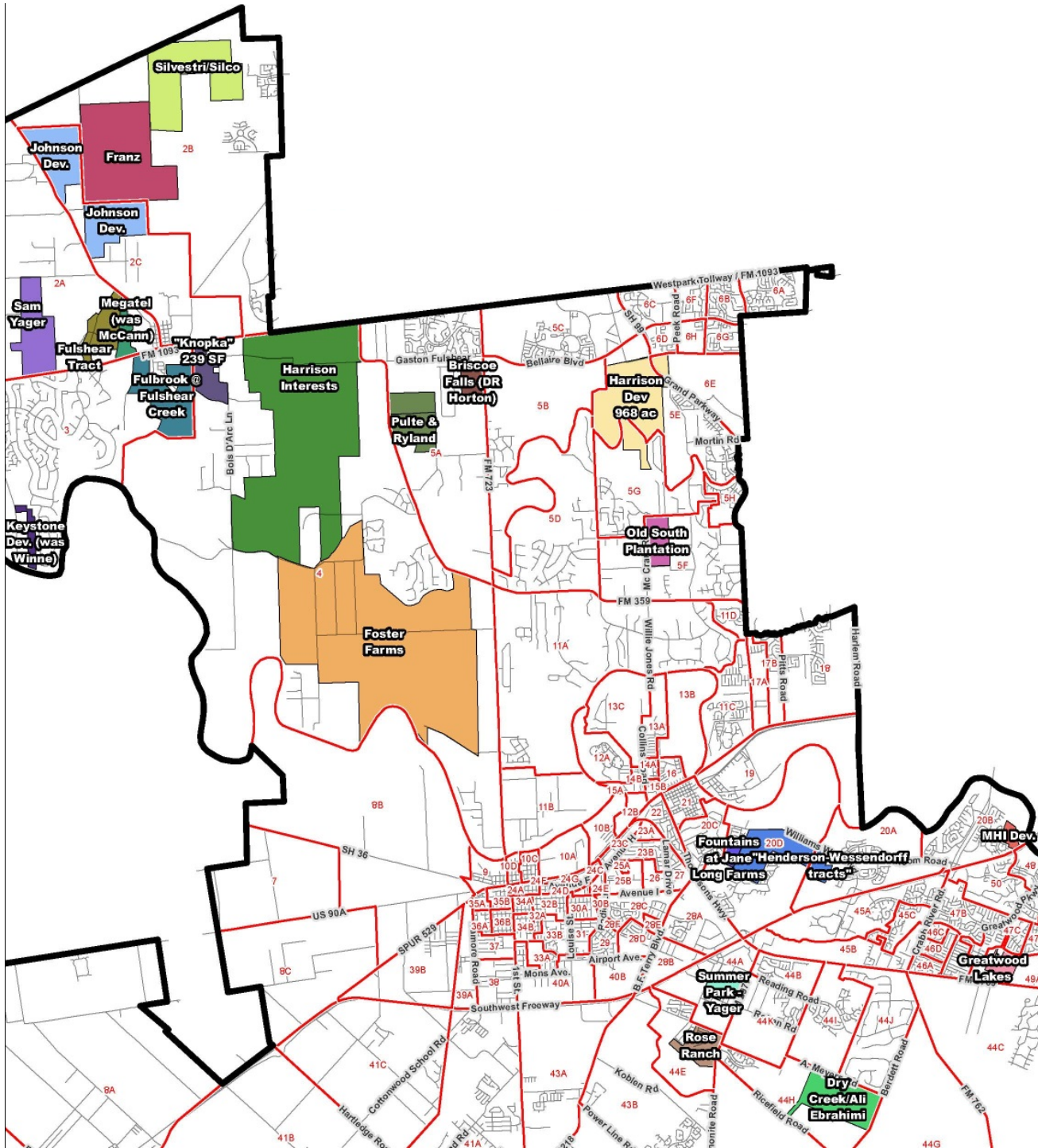
Lamar C.I.S.D.– in the “top 6” in Houston

	<u>annual sales</u>	<u>incr. over last year (4Q)</u>
Houston I.S.D.	2,543	7%
Katy I.S.D.	3,544	22%
Cy-Fair I.S.D.	3,057	25%
Fort Bend I.S.D.	2,914	32%
Conroe I.S.D.	1,950	34%
Lamar C.I.S.D.	1,741	44%

The two least “built-out” districts are leading in housing starts and home sales/closings

Lamar C.I.S.D. had: 492 closings in the 4thQ of 2013
342 closings in the 4thQ of 2012





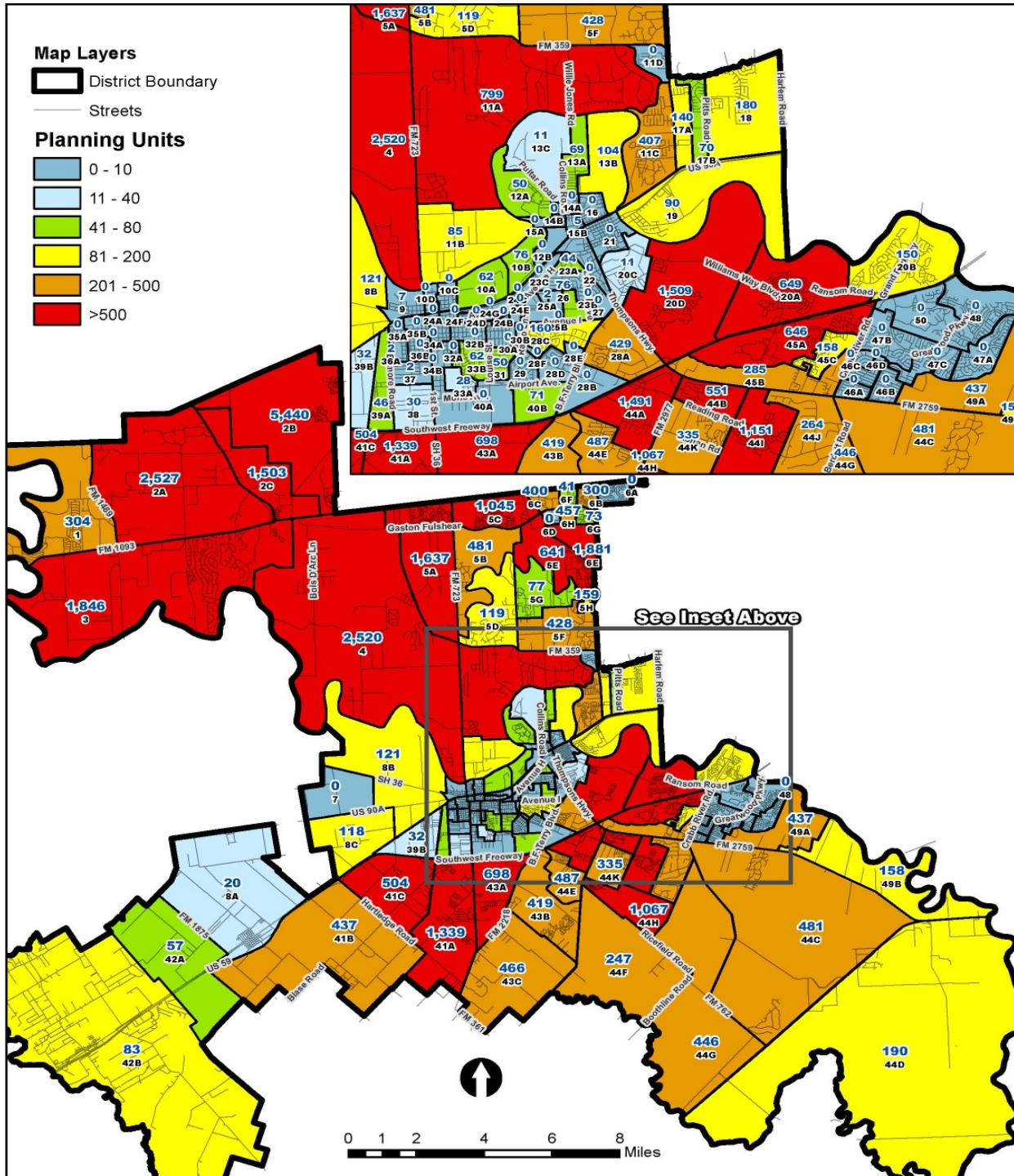
Future Highest Growth Residential Developments

Planning Unit	Subdivision	New Housing Occupancies		
		2014-18	2018-23	2014-23
4	Harrison Interests/Foster Farms	162	1910	2,072
2B	Cross Creek Ranch	501	1101	1,602
2B	DR Horton-Tamarron Lakes & Fulsher Crossing	387	890	1,277
2B	Firethorne West	860	176	1,036
44D, 44F, 44G	George Foundation	158	700	858
5C	Lakes of Bella Terra	768	27	795
3	Fulbrook at Fulshear Creek	346	445	791
20D	Del Webb Sweetgrass	597	155	752
2C	Fulshear Farms-Johnson Development	122	595	717
44I	Bonbrook Plantation	381	263	644
2B	Silvestri/Silco	138	465	603
2A	Twinwood	25	545	570
2A	Sam Yager-was Westheimer-Fulsher Parcel	118	445	563
44B	Summer Lakes	260	291	551
5A	Pulte-ryland - was Poarch/Swinbank	153	385	538
6E	Long Meadow Farms	266	249	515
44H	Walnut Creek	230	276	506
41A	Briarcreek Crossing	226	269	495
2A	Beazer-Fulshear Invest's & Fulshear Equine	145	344	489

Projected New Housing Occupancies 2014 – 2023

Year Ending in October:	Single Family	Multi- Family	Total New Housing Units
2014	1,338	246	1,584
2015	1,897	635	2,532
2016	2,147	527	2,674
2017	2,608	789	3,397
2018	3,063	1,129	4,192
2019	3,465	1,222	4,687
2020	3,916	1,030	4,946
2021	4,211	1,023	5,234
2022	4,533	859	5,392
2023	4,823	582	5,405
2014-2018	11,053	3,326	14,379
2019-2023	20,948	4,716	25,664
2014-2023	32,001	8,042	40,043





Projected New Housing Occupancies

Feb 2014
to
Oct 2023

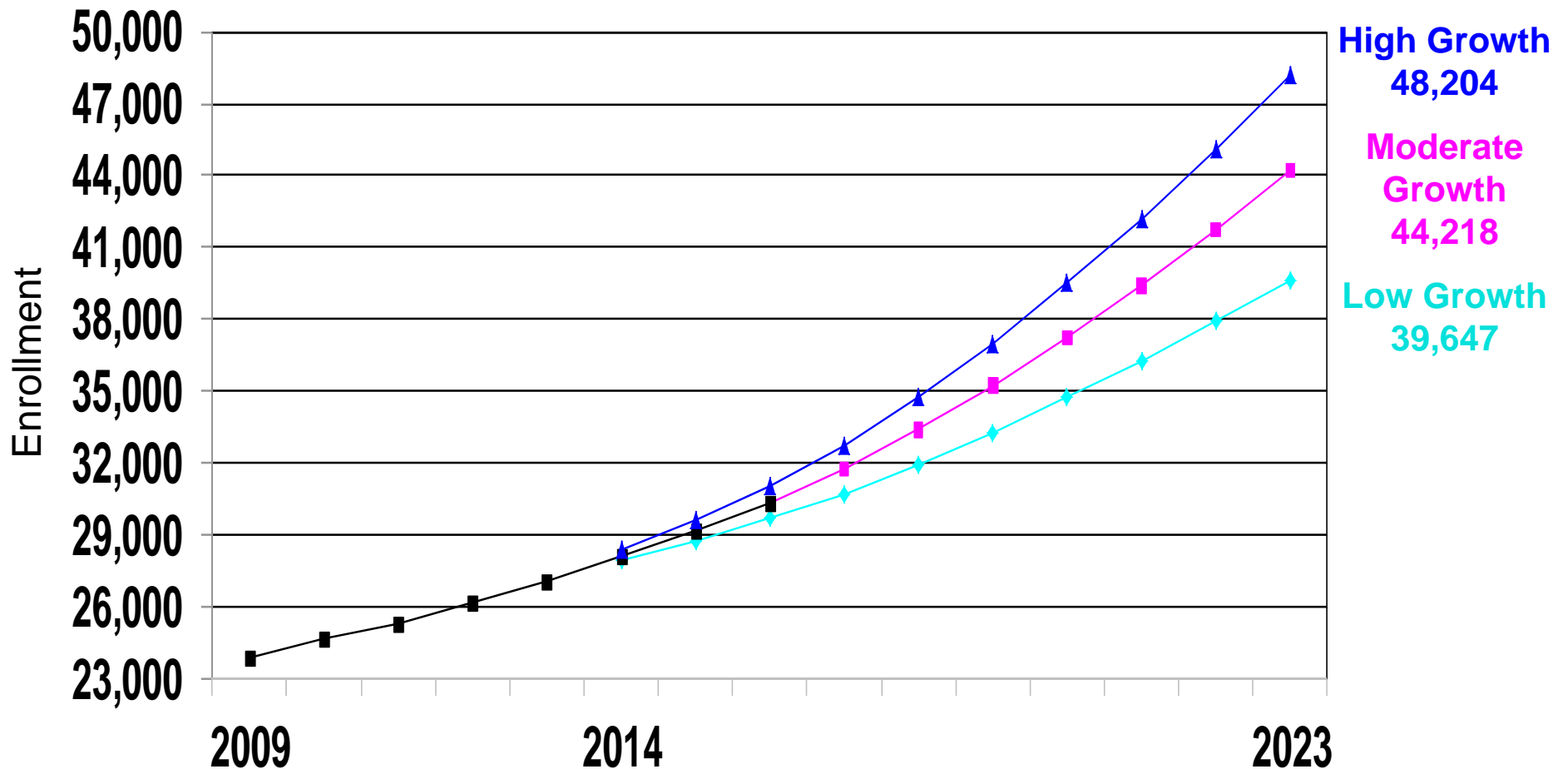


Housing Units in Lamar CISD Current and Future

	Single-Family		Multi-Family	
	#	%	#	%
Current (2012)	37,920	86%	6,082	14%
Estimated Growth (2012-2013)	1,460	71%	582	29%
Projected Added (2014-2023)	32,001	80%	8,042	20%
Projected Total (2023)	71,381	83%	14,706	17%



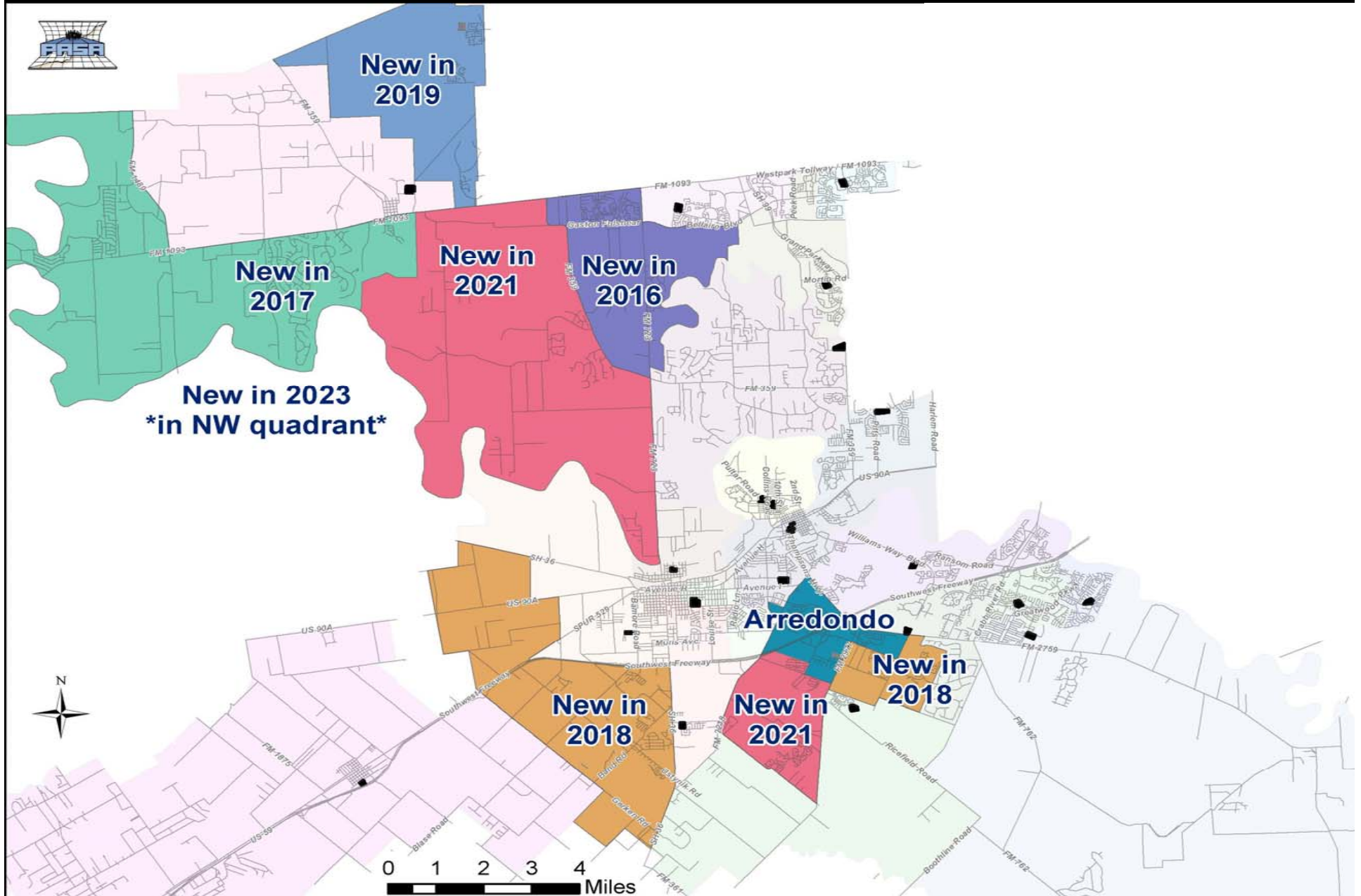
Three Scenarios of Growth



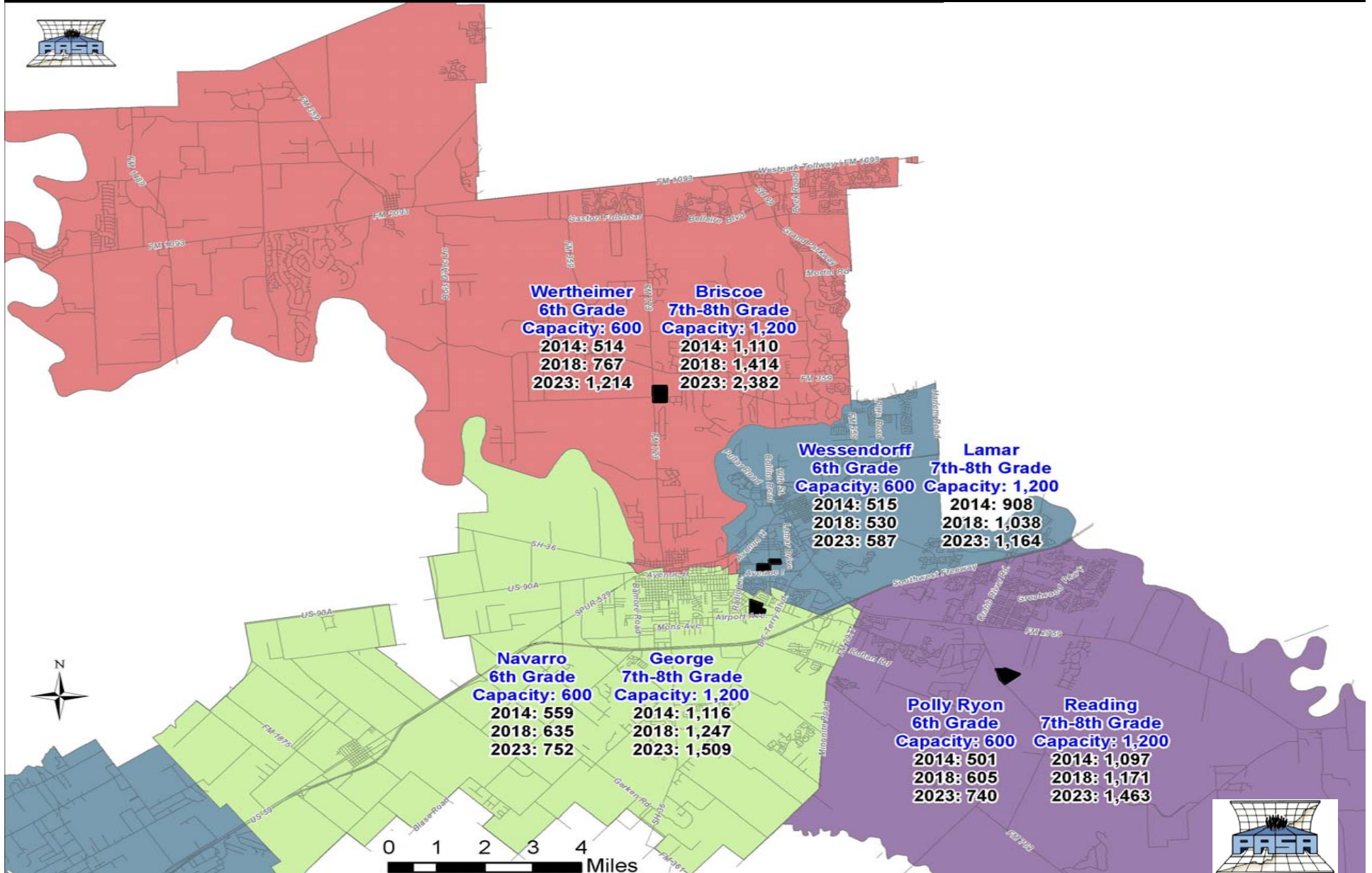
Elementary School Long Range Plan Comparison to Previous Years

	2014	2015	2016	2017	2018	2019	2020	2021	2022	2023	Total
2012-13 Study		1	1	1	2	1		2		1	9
2012-13 Study	1		1		2	2		1			7
2011-12 Study	1			1		2					4
2010-11 Study		1		2	1	1					5
2009-10 Study	1	2	1	2	1						7

Elementary Long Range Planning Summary



Projected Resident Middle School and Junior High School Students

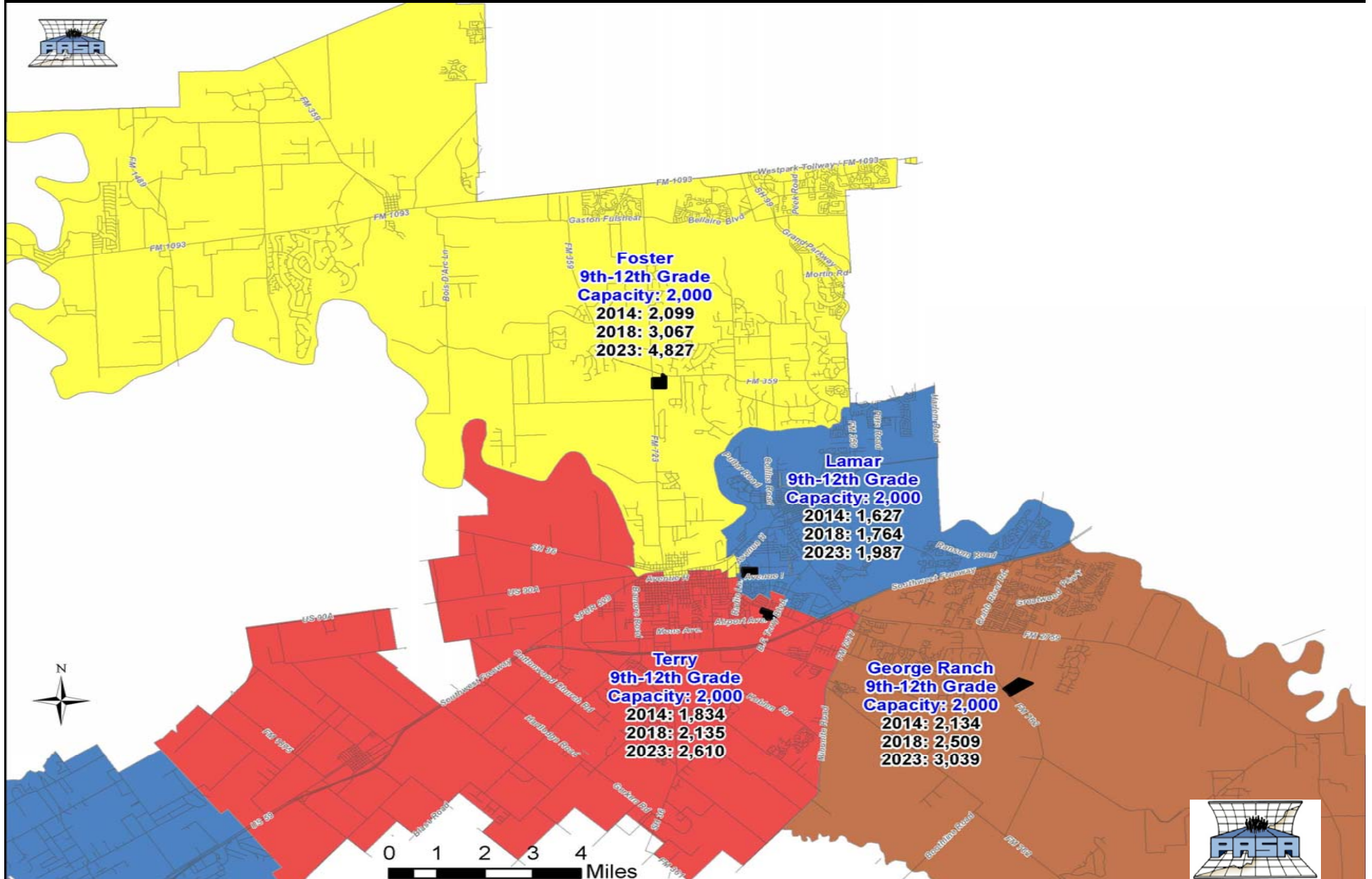


Middle School and Junior High School Long Range Planning

	Fall	Fall	Fall	Fall	Fall	Fall	Fall	Fall	Fall	Fall
	2014	2015	2016	2017	2018	2019	2020	2021	2022	2023
6th Grade Campuses										
Navarro	559	577	585	594	635	645	669	694	724	752
Polly Ryan	501	536	547	556	605	614	640	668	704	740
Wertheimer	514	572	592	623	767	792	877	965	1,087	1,214
Wessendorff	515	503	505	510	530	533	544	556	570	587
7th-8th Grade Campuses										
Briscoe	1,110	1,130	1,220	1,322	1,414	1,622	1,822	1,944	2,143	2,382
George	1,116	1,156	1,187	1,219	1,247	1,307	1,369	1,398	1,450	1,509
Lamar	908	1,002	1,015	1,028	1,038	1,069	1,095	1,111	1,133	1,164
Reading	1,097	1,058	1,104	1,145	1,717	1,236	1,299	1,336	1,397	1,463



Projected Resident 9th-12th Grade Students



High School Long Range Planning

	Fall 2014	Fall 2015	Fall 2016	Fall 2017	Fall 2018	Fall 2019	Fall 2020	Fall 2021	Fall 2022	Fall 2023
Foster HS	2,099	2,299	2,532	2,776	3,067	3,344	3,638	4,060	4,418	4,827
George Ranch HS	2,134	2,215	2,323	2,410	2,509	2,596	2,686	2,718	2,927	3,039
Lamar HS	1,627	1,666	1,697	1,724	1,764	1,801	1,841	1,897	1,940	1,987
Terry HS	1,834	1,894	1,975	2,053	2,135	2,223	2,305	2,415	2,507	2,610



Lamar C.I.S.D.

Demographic Update

May 21, 2014

