

Judge
James C. Adolphus
Elementary School

Standardized Dress Code



Collared Shirts



Solid Red



Solid White



Solid Black



Solid Navy Blue



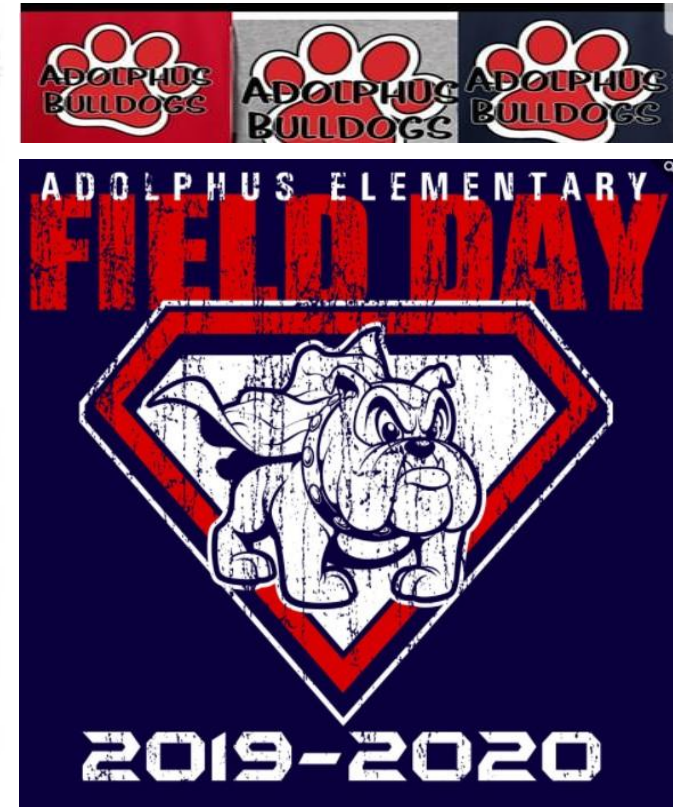
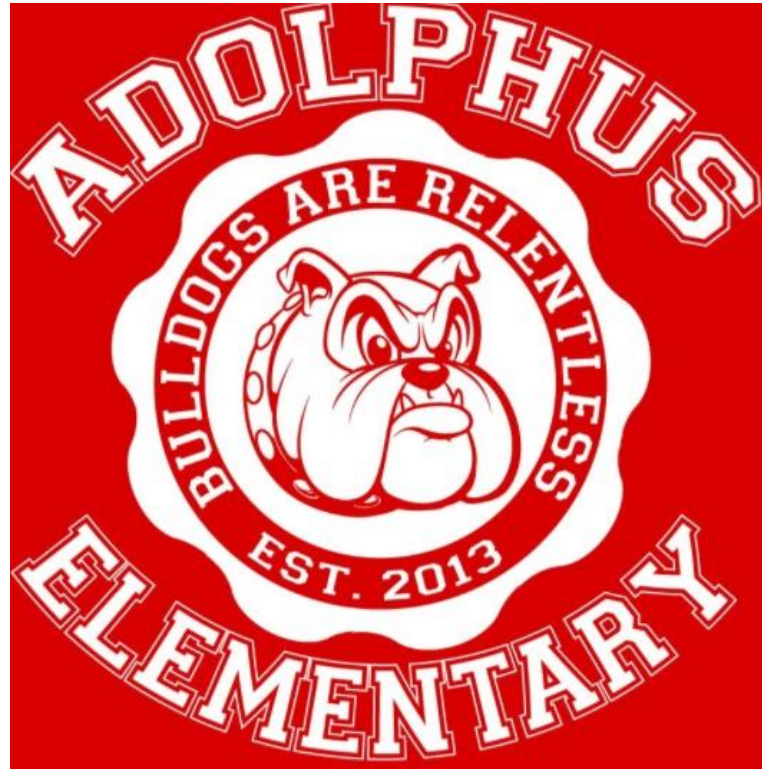
Solid Gray



Uncollared Shirts



Except for . . .



Any Official PTO and Adolphus Spirit Shirts purchased through the school.



No rips
No tears
No holes





=



=



=



Dresses

Solid Khaki or Khaki with
Solid Collared Shirt



Solid Black with
Collar



Solid Gray with
Collar



Solid Navy Blue
with Collar



Solid Red with
Collar



Leggings

Red



White



Black



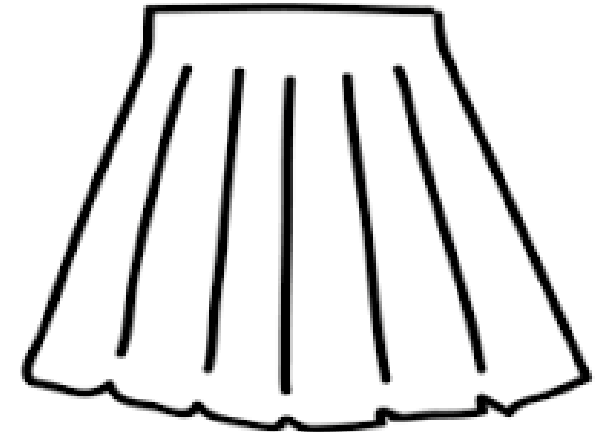
Navy Blue



Gray



And
must be
Worn
under
Shorts or
Skirts



Jackets worn in building

Solid Red



Solid White



Solid Black



Solid Navy Blue



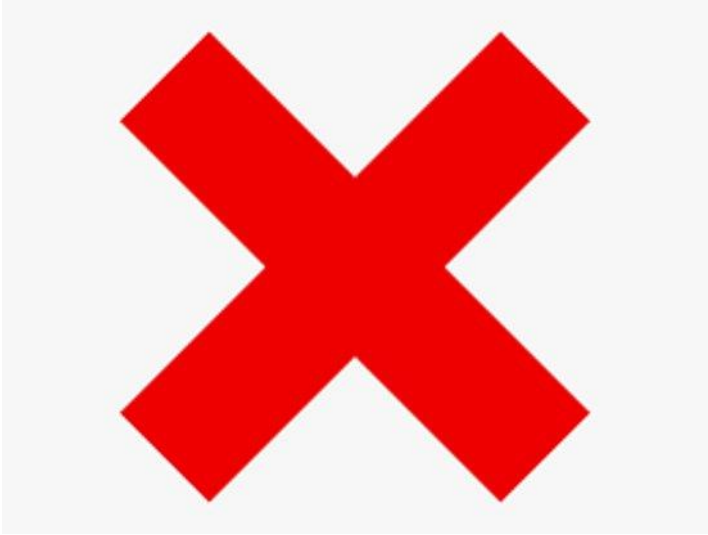
Solid Gray



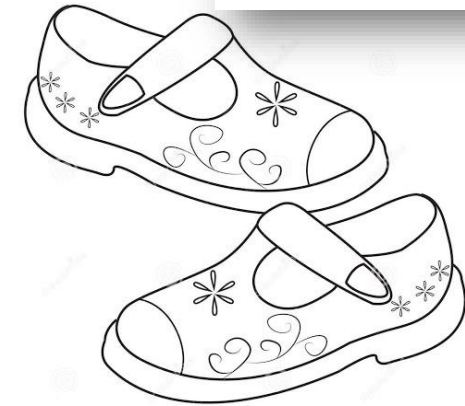
OR



Official PTO Jacket



Shoes



Must be safe for
School



Athletic closed toe
and shoes with back
are recommended



Heels



House
Shoes



Flip
Flops



wheels

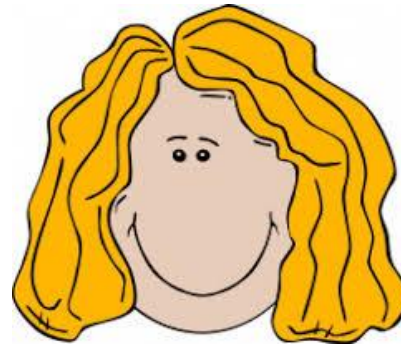
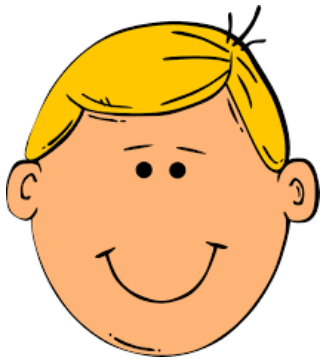


Hair must be

Clean



Well-groomed



Out of eyes



Non-distracting or
"conspicuous"

