

Do these new requirements apply to students who were in high school prior to 2011-2012?

No. Students in high school prior to 2011-2012 will continue to have TAKS as their graduation requirement.

How will this impact students taking high school courses in junior high?

If a student is enrolled in grades 7-8 or below and is taking a course for which there is an EOC assessment, that student will be required to take the applicable EOC test. For example, an eighth grade student enrolled in Algebra I will take the Algebra I EOC, as well as the other required grade 8 STAAR assessments. The 15% rule will apply for the EOC assessed courses.

Will the EOC scores count in GPA and Class Rank?

Yes. Per Texas Education Agency expectations, there should be a relationship between the EOC scores and GPA and Class Rank for all applicable students. For 2012-2013 this will not include grade 7 and 8 students taking Algebra I or Geometry.

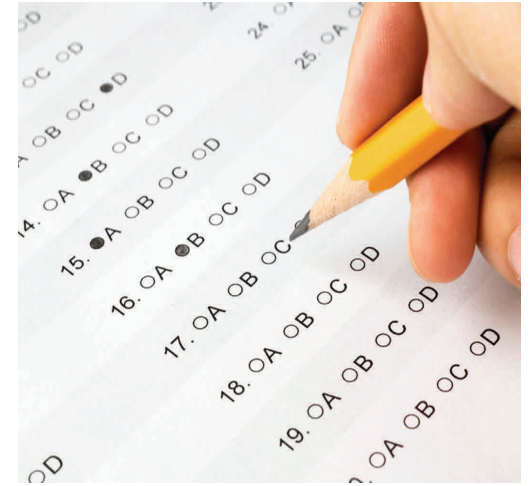
What if a student already took Algebra I or Geometry in grades 7 or 8 prior to 2011-2012?

The student is not required to take an EOC assessment for a course completed prior to 2011-2012.



3911 Ave I  
Rosenberg, TX 77471  
Phone: 832-223-0000

Lamar CISD



## Informational Guide to End-of- Course Assessments and Student Grades

**Lamar CISD**

**A Proud Tradition —**

**A Bright Future**

# State of Texas Assessments of Academic Readiness: End Of Course (EOC) Assessments

## APPLYING THE STATE MANDATED 15% RULE

Beginning with the 2012-2013 school year a student's performance on an End-of-Course (EOC) assessment will account for 15% of the student's final grade for the course, as reported on the student's transcript.

LCISD will calculate the 15% requirement equally into both semesters of a student's grade for an EOC course in accordance with the District's administrative regulations.

Courses with an EOC Assessment are: English I, II, and III; Algebra I, Geometry, and Algebra II; Biology, Chemistry, and Physics (including Principles of Technology); World Geography (including Human Geography), World History, and United States History.

The EOC will be administered in the above courses during the spring of each school year. Since credits are attained towards high school graduation, failure to pass the EOC is not a sole consideration for a student moving from one grade level to the next.

### What happens if a student is absent or cannot complete the test?

LCISD will assign an incomplete in the course until the student tests at the next testing opportunity.

### What happens if a student fails the course but passes the EOC?

The student is not required to retest when the course is repeated. The original EOC score will be used to compute the student's semester grades.

### What happens if a student passes the course but fails the EOC?

If the student's combined score with the EOC averages to a 70% or higher, the student will receive credit for the course. If not, the student will be allowed to regain credit at the next testing opportunity, if the grade combined with the EOC averages to 70% or higher.

### Under what other circumstances does the EOC 15% rule apply or not apply?

- The 15% rule applies for:
  - Correspondence Courses or Other Alternative Method Courses
  - Dual Credit Courses
  - AP Courses
- The 15% rule does not apply to Credit by Examination (with or without prior instruction). However, students will still have to take the EOC for graduation testing requirements.

### What are the EOC requirements for the different graduation programs?

1. **Distinguished Achievement Program (DAP):** Pass all 12 EOC assessments and meet the cumulative score requirement in each of the four foundation content areas, and score at Level III (Advanced) on Algebra II and English III assessments.
2. **Recommended High School Program (RHSP):** Pass all 12 EOC assessments and meet the cumulative score requirement in each of the four foundation content areas, and score at Level II (Satisfactory) on the Algebra II and English III assessments.
3. **Minimum High School Program (MHSP):** Pass EOC assessments for all courses in which the student is enrolled and for which there is an EOC assessment available, and meet a cumulative score requirement in each of the four foundation content areas.

Lamar CISD

3911 Ave I  
Rosenberg, TX 77471